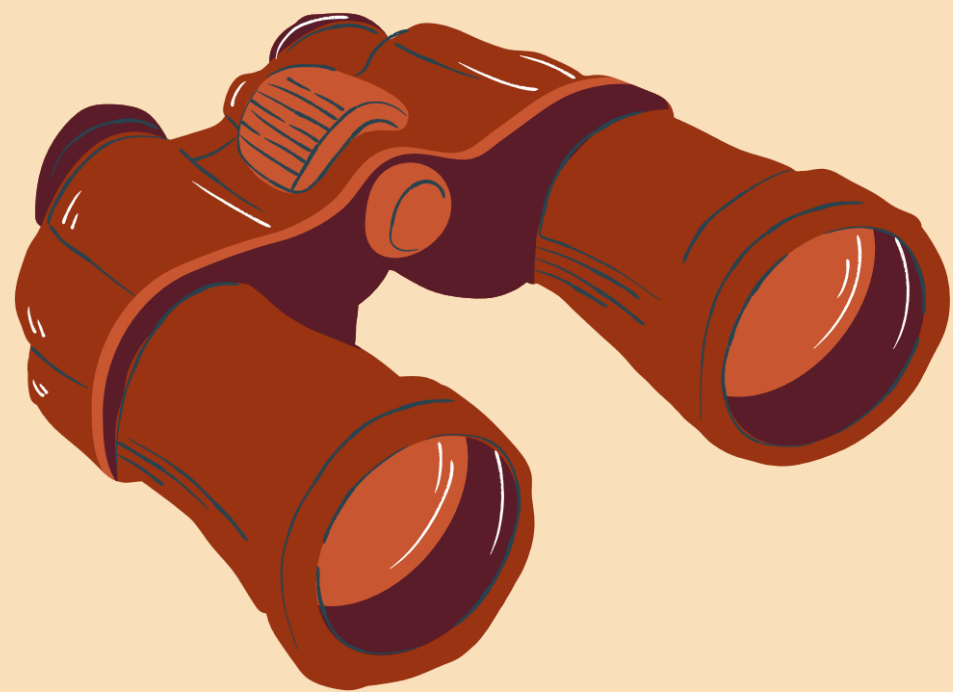
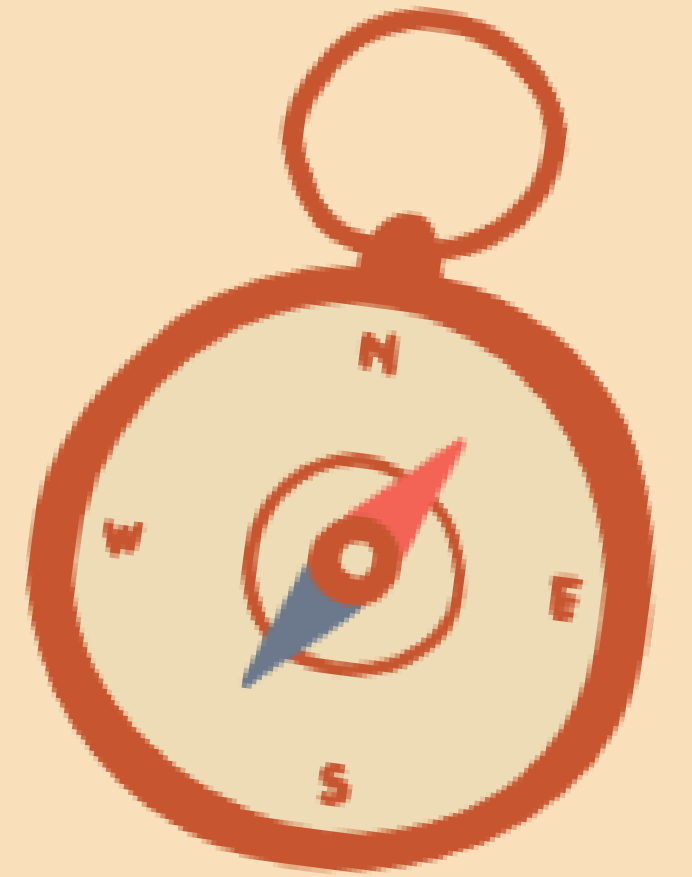


# YEAR 4 RESIDENTIAL



# CONTENTS



All about Whitemoor



Sleeping arrangements



Food



Activities



Typical day



Departure/Arrivals



Whitemoor rules



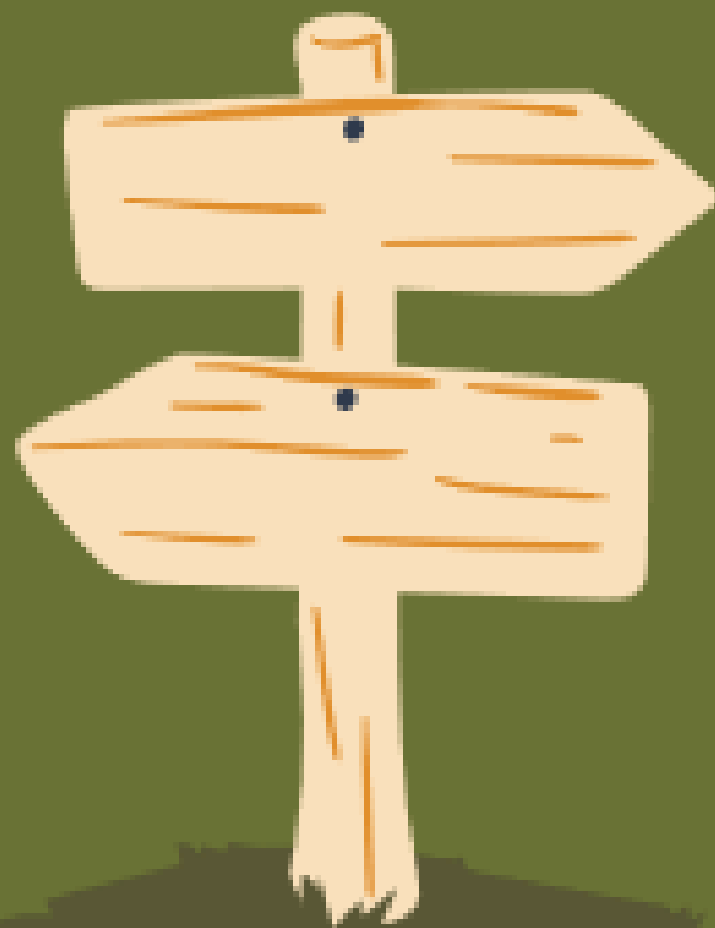
Medical



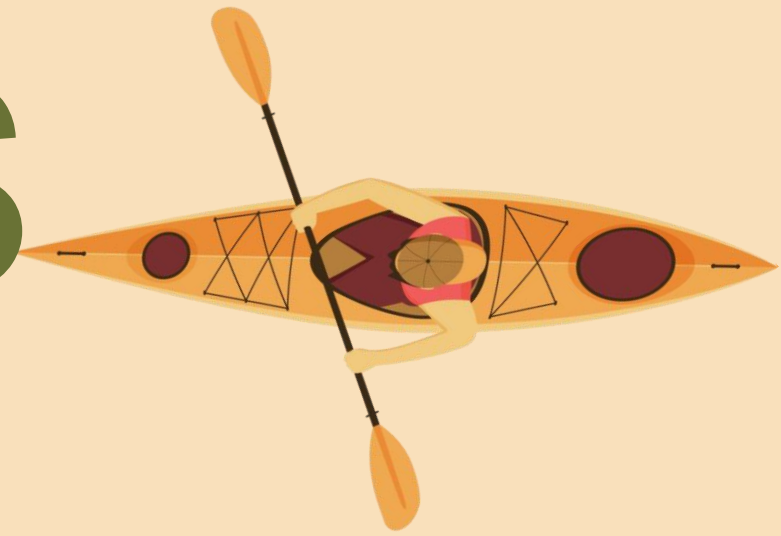
Adults



Other bits



# WHITEMOOR LAKES



A stunning purpose built activity centre, overlooking a 40 acre lake, Whitemoor Lakes is located between Lichfield and Burton on Trent in the south-east of Staffordshire. Or, put more simply, just north of Birmingham. It will take approximately 1 hour and 40 minutes in the coach. However, we will stop on route at a service station to allow toilet breaks and the opportunity to stretch our legs.

Whitemoor offers up to 30 different activities which all happen on site. However, as we're not able to complete all 30 activities in the time that we're there and with some only being available in certain seasons, the class teachers have had to pick which one's we'd prefer to do. Whitemoor have/will then put these into an timetable.



# SLEEPING ARRANGEMENTS

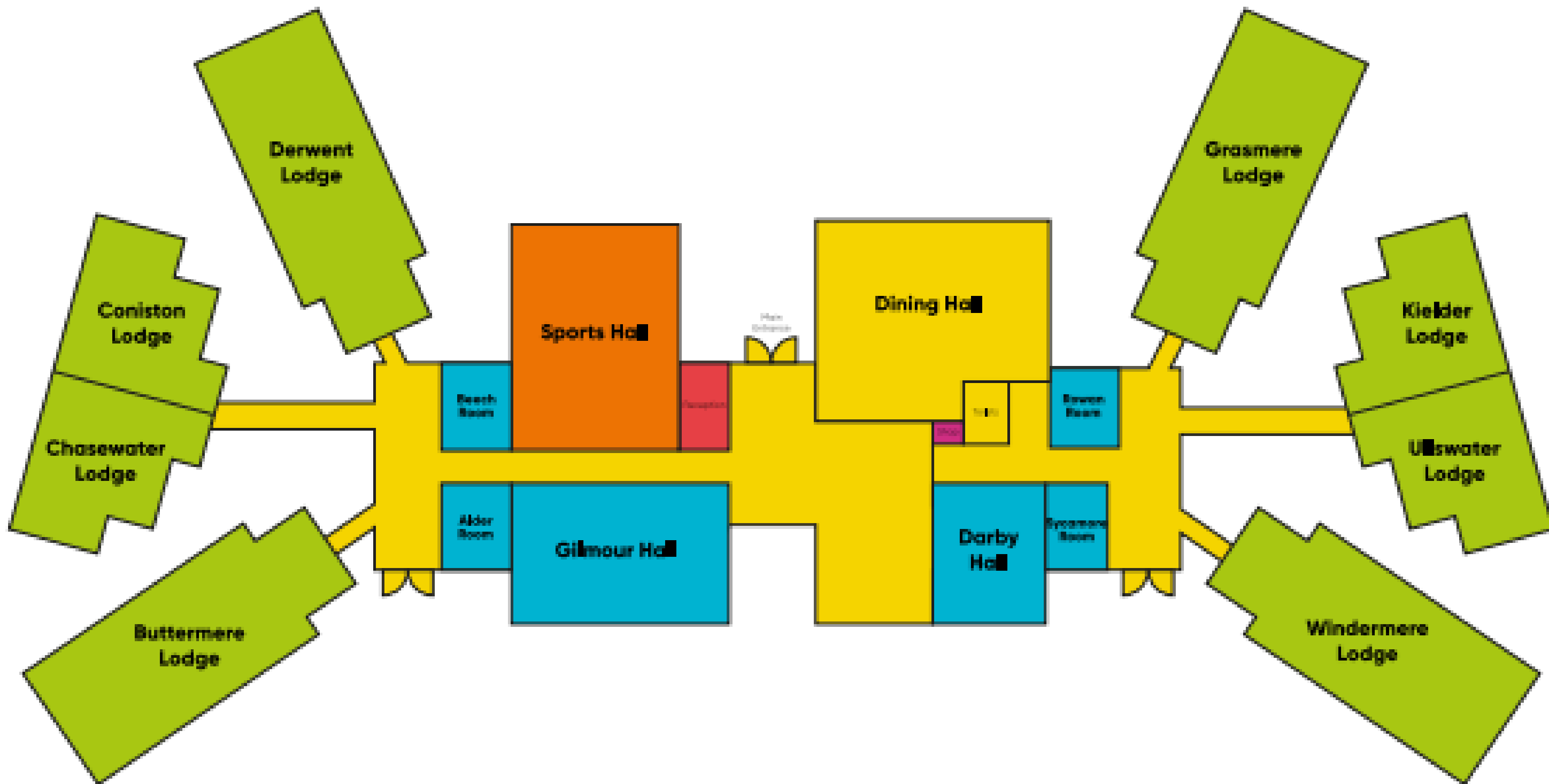


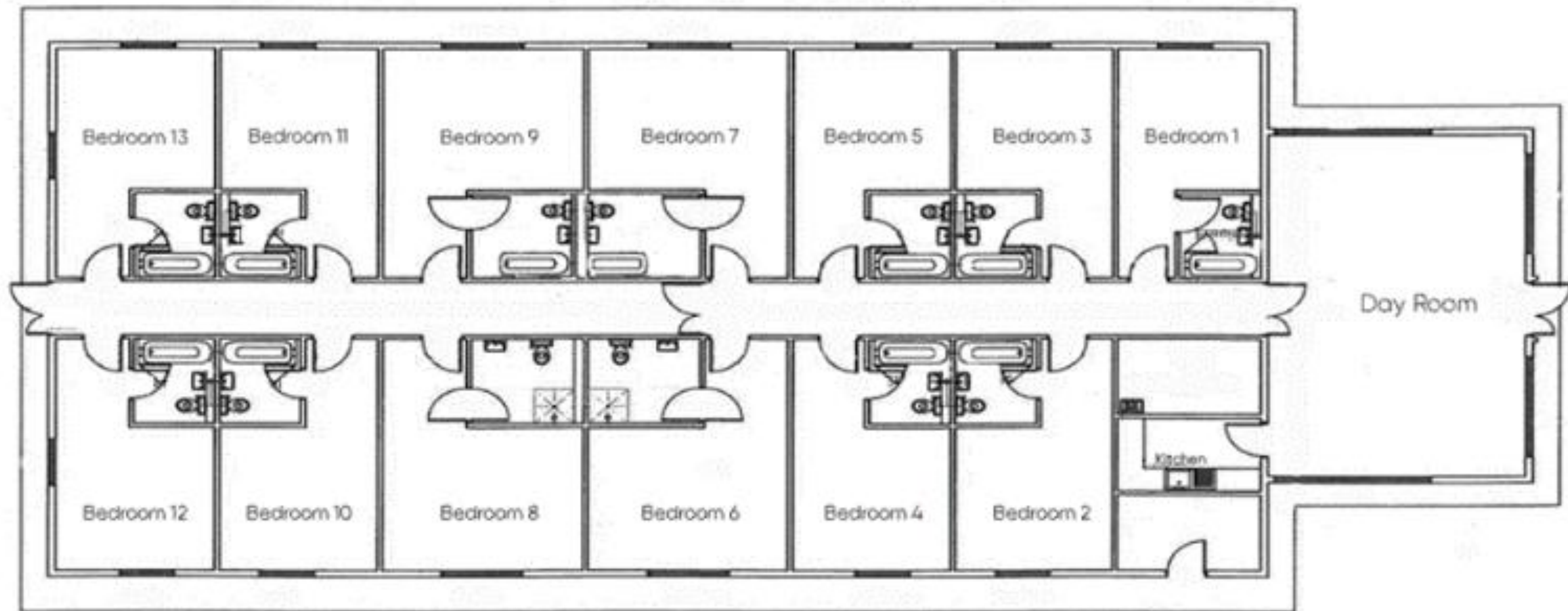
Our year group will be assigned to two lodges. One lodge will accommodate the boys and the other girls. Within your lodge, you will have access to a communal area which you can socialise during times when not participating in activities or mealtimes.

Our lodges will be allocated nearer to our visit. Each room can accommodate either 4, 6 or 7 pupils. The rooms will have a mixture of bunkbeds and single beds. Each room has toilet facilities.

The children have already provided us with three names of other pupils who they wish to share with. We will try our best to ensure they are sharing with at least one of those named pupils.







# FOOD

Any dietary requirements, will be sent to Whitemoor.



We will all sit and eat breakfast and dinner together as a year group in the communal dining hall at the allocated time slot that we have been given. As other schools will also be using the facility, we may be sharing the dining hall with other pupils. However, we will have the same tables throughout the duration of our visit.

Depending on which activity you will be doing around lunch time will depend if you eat your lunch out, elsewhere on the grounds, or back in the dining hall.

Upon arrival at Whitemoor, the children will be having lunch. This will not be provided by Whitemoor and with it being a Monday, Fresh Start will be unable to provide an alternative.

Please provide lunch.



# FOOD

## Meal Times

	Monday - Sunday
Breakfast	8.30am
Lunch	1.00pm
Evening Meal	6.00pm

The timings shown are approximate timings during the day.

If you are providing food due to other circumstances that we are aware of, this will not be able to be heated due to Whitemoor's Health and Safety policy.

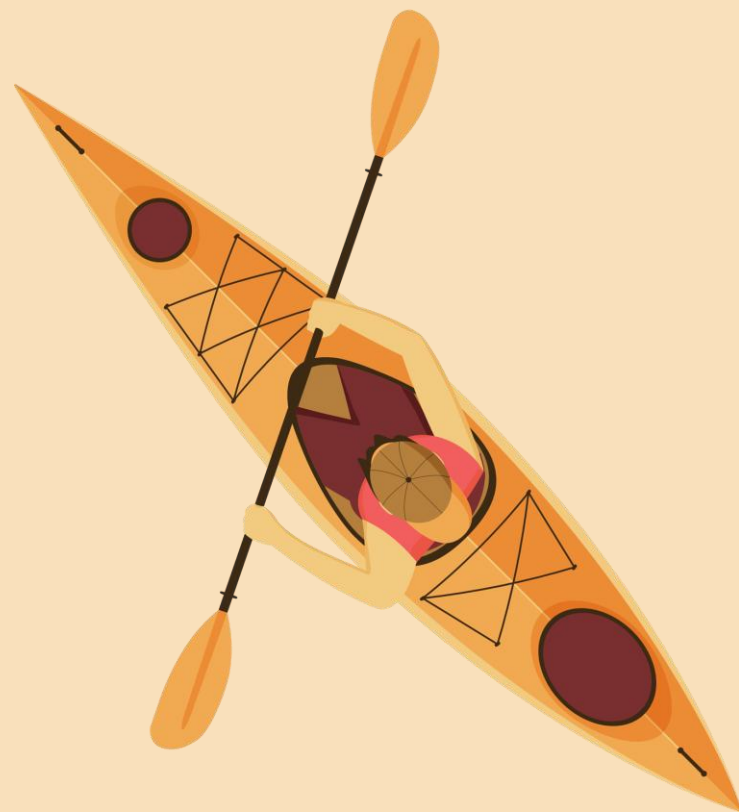
In the dining hall, pupils will share responsibility for setting the table, ensuring others have drinks and clearing away at the end of the meal.

Breakfast and salad items will be presented in a buffet style in the middle of the dining hall.

# ACTIVITIES

## Ground Activities

- Archery
- Challenge Course
- Nightline
- Problem Solving
- Orienteering
- Compass Course
- Indoor Enigma
- Eggs Can Fly
- Circus Skills
- Fencing
- Buggy Building
- Fire Lighting



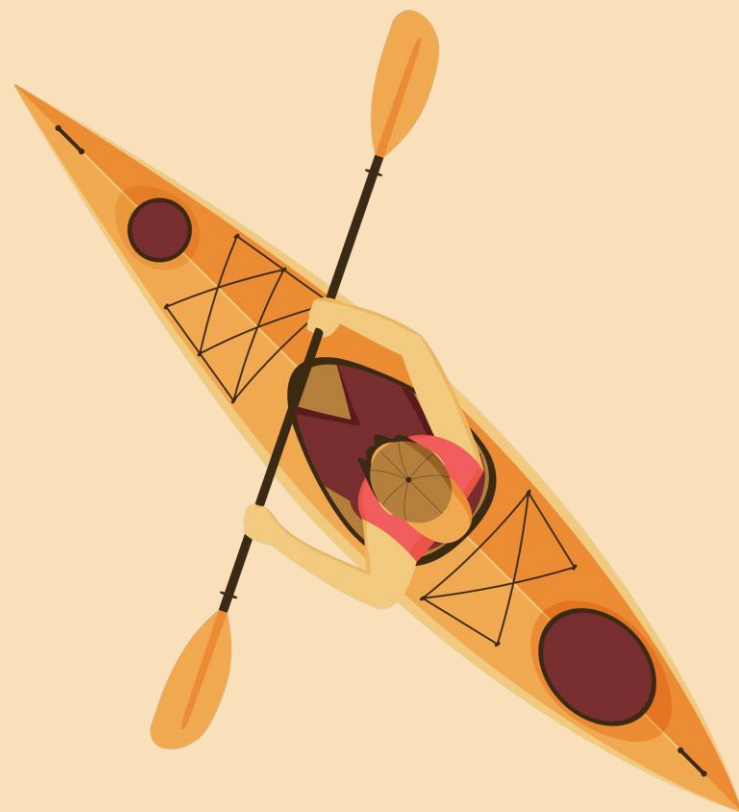
## Watersports Activities

- Sailing
- Canoeing
- Rafted Canoeing
- Raft Building
- Giant Stand-Up Paddleboarding
- Kayaking

# ACTIVITIES

## High Level Activities

- Climbing
- Zipwire
- Abseiling
- Leap of Faith
- Traverse
- Gladiator
- High All Aboard
- See-Saw



## Additional Activities

- Campfire
- Extreme Teams
- External Providers
- UV Games
- Team Games
- Ice Breakers
- Disco
- Run Around Quiz



# ACTIVITIES

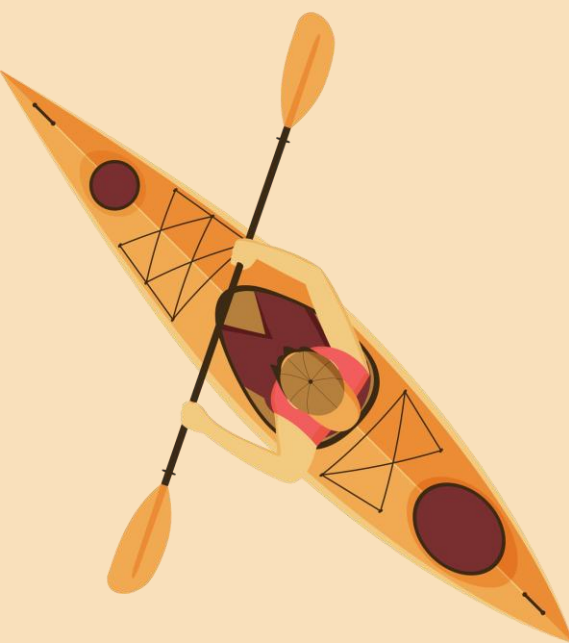


## Bloxham Primary School Action Plus Activity Programme

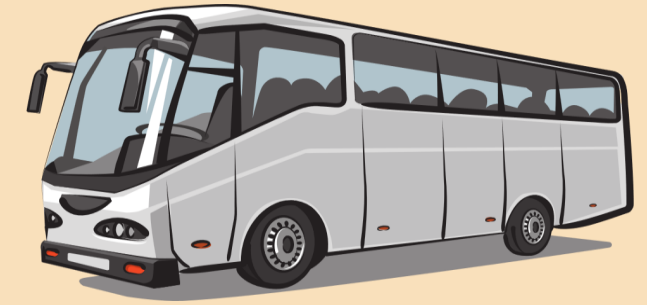
Monday 27th - Wednesday 29th April 2026

	Monday				Tuesday					Wednesday		
	11.30	2.00-3.30	4.00-5.30	7.00-8.00	9.30-11.00	11.30-1.00	2.00-3.30	4.00-5.30	7.00-8.00	9.30-11.00	11.30-1.00	2.00
Group 1	Arrival and Welcome	Canoeing 1	Gladiator 1	Extreme Teams 1	Orienteering 1	Zip Wire 2	Nightline 2	Climbing 1	Camp Fire 1	Problem Solving 1	UV Games	Goodbyes and depart
Group 2		Zip Wire 1	Canoeing 1		Climbing 2	Orienteering 1	Problem Solving 1	Nightline 2		Gladiator 1		
Group 3		Nightline 2	Zip Wire 1		Problem Solving 1	Canoeing 2	Climbing 2	Orienteering 1		UV Games	Gladiator 1	
Group 4		Gladiator 1	Nightline 2		Zip Wire 2	Problem Solving 1	Canoeing 2	Climbing 2			Orienteering 1	

Our individual activity sessions are suitable for up to 12 participants & 1 group leader (age 18 or older). Participants must be, at a minimum, in Year 3 to partake in our instructed activities. Please note that any requests to change this programme need to be made no later than four weeks before your visit and are subject to availability.



# DEPARTURE / ARRIVAL



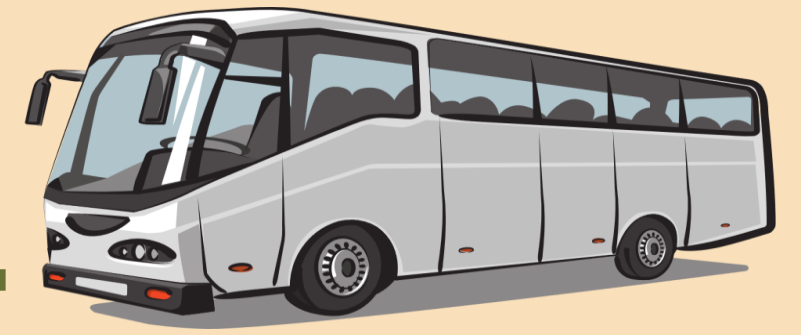
**When leaving on the Monday, the coach is due to leave school at 09:15/20 - therefore, the children will arrive at school at the normal time and place their luggage in the school hall or the Children Centre. We will let you know nearer the time which it will be.**

**The children will line up at 08:40 as per normal on the playground and go into class for a final toilet break and talk about behaviour expectations. The children will then take their luggage to the coach in preparation for departure.**

**As mentioned, the coach journey will last roughly 2 hours (including a toilet stop) and we will arrive at Whitemoor for 11:00/11:30.**

**Parents will receive a message via Parent Hub on arrival.**

# DEPARTURE / ARRIVAL



**When returning to school on the Wednesday, parents will receive a message when the coach leaves Whitemoor. Parents will then receive another message when the coach is 30 minutes away from school.**

**If the coach experiences any delays on the travel back, parents will be notified via text message.**

**When the coach arrives at school, we understand that parents and pupils want to be reunited, however, we ask that parents remain at a distance to allow the luggage to come off and for pupils to exit the coach safely with the adults knowing who and where they're going.**

# MEDICAL

**If medication is required for the trip, a medical consent form will need to be completed. These can be collected from the school office.**

**The medication and form will need to be stored in a named box, such as a lunch box.**

**If you feel that a member of staff will need to know a little more information regarding the medication, please arrange to meet with either Ms. Staples or Miss Aina who can arrange a meeting alongside the trained first aider who will also be attending the trip.**

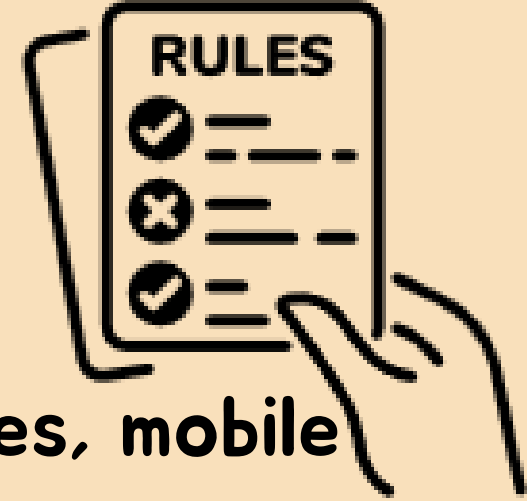


# ADULTS

**The adults who will attending the trip have not been completely finalized, however Miss Staples and Miss Aina are a definite!**



# WHITEMOOR RULES



- **No electronic devices are permitted on the residential. These include smart watches, mobile phones, cameras or tracking devices such as air tags**
- **No electrical devices that involve having to be plugged in are permitted on the residential as these will need to be tested by Whitemoor and this isn't a guaranteed**
- **No food is to be taken unless a member of staff is aware due to dietary requirements. Staff and instructors will conduct bag checks if we feel it's appropriate.**
- **If poor behaviour choices are shown and a member of staff or instructor feels that it's no longer safe for the child to participate in the residential, parents will be contacted to come and collect from Whitemoor**
- **Any damages that occur from a pupil, Whitemoor will charge parents a standard 50 pound charge per damage - more if the damages are greater**
- **Pupils found entering other lodges or rooms that are not their own may result in non participation of activities**
- **Quiet hours - 23:00-07:00. However, we will be setting earlier bedtime/lights out**

# OTHER USEFUL NEWS

**Money - pupils do not need to bring money on the trip as we haven't chosen the shop as an evening activity and children will not be accessing the shop at a service station as a fruit snack will be provided, or they can have a snack in their lunchbox.**

**Items such as a reading book will be allowed for the pupil to read in their communal lounge. But these will be their responsibility.**

**Pupils are not permitted to wear school uniform when travelling to and from Whitemoor, however, they are required to wear their hoodies. The hoodies will be handed out to the children on the morning of the trip when they've handed in their luggage.**

**Bedding is provided at the venue. However, pupils will need towels.**



ADVENTURES  
FEED YOUR SOUL!

Enjoy your life  
and go travel.

